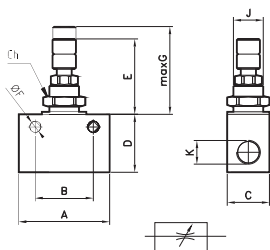


**RF4005**

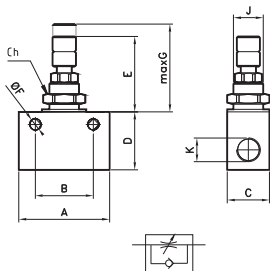
BI-DIRECTIONAL IN LINE FLOW REGULATOR / **RÉGULATEUR DE DÉBIT BIDIRECTIONNEL EN LIGNE**  
REGOLATORE DI FLUSSO IN LINEA BIDIREZIONALE



CODE	K	A	B	C	D	E	F	G	CH	J
RF4005100	M5	25	18	12	20	23	4.5	28	12	10X1
RF4005200	1/8	35	24	15	22	24	4.5	29,5	12	10X1
RF4005300	1/4	40	24	20	30	26	4.5	32,5	12	10X1
RF4005400	3/8	45	30	22	35	31	6	39,5	18	15X1
RF4005500	1/2	57	30	27	40	31	6	39,5	18	15X1

**RF4004**

UNI-DIRECTIONAL IN LINE FLOW REGULATOR / **RÉGULATEUR DE DÉBIT UNIDIRECTIONNEL EN LIGNE**  
REGOLATORE DI FLUSSO IN LINEA UNIDIREZIONALE



CODE	K	A	B	C	D	E	F	G	CH	J
RF4004100	M5	25	18	12	20	23	4.5	28	12	10X1
RF4004200	1/8	35	24	15	22	24	4.5	29,5	12	10X1
RF4004300	1/4	40	24	20	30	26	4.5	32,5	12	10X1
RF4004400	3/8	45	30	22	35	31	6	39,5	18	15X1
RF4004500	1/2	57	30	27	40	31	6	39,5	18	15X1

**A131X**

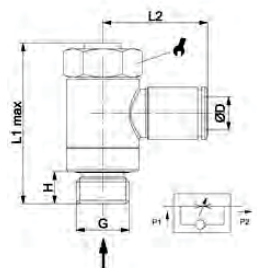
FLOW REGULATOR FOR VALVES IN STAINLESS STEEL / **RÉGULATEUR DE DÉBIT EN INOX POUR VALVE**  
REGOLATORE DI FLUSSO PER VALVOLE IN INOX



CODE	ØD	G	H	L1 max	L2	↗
A131X 4-1/8	4	G1/8	7	32	21	14
A131X 6-1/8	6	G1/8	7	32	22,5	14
A131X 6-1/4	6	G1/4	8	40	24,5	17
A131X 8-1/8	8	G1/8	7	32	24	14
A131X 8-1/4	8	G1/4	8	40	26	17

**A132X**

FLOW REGULATOR FOR CYLINDER IN STAINLESS STEEL / **RÉGULATEUR DE DÉBIT EN INOX POUR VERIN**  
REGOLATORE DI FLUSSO PER CILINDRI IN INOX



CODE	ØD	G	H	L1max	L2	↗
A132X 4-1/8	4	G1/8	7	32	21	14
A132X 6-1/8	6	G1/8	7	32	22,5	14
A132X 6-1/4	6	G1/4	8	40	24,5	17
A132X 8-1/8	8	G1/8	7	32	24	14
A132X 8-1/4	8	G1/4	8	40	26	17