



Airwork's pneumatic valves combine big resistance, reliability and versatility of assemblage; the VK series can be assembled in several ways:
In-line, on panel, on multiple bases, on manifolds and on cylinders.
Available size are 1/8, 1/4 and 1/2, the available functions are 3/2, 5/2 e 5/3.

La série des distributeurs pneumatiques à raccordement direct série VK a des caractéristiques multiples de robustesse, de fiabilité et de montage.
En ligne, sur embase multiple, assemblée et directement sur le vérin.
Elle est disponible en taille 1/8-1/4 et 1/2 ainsi qu'en fonction 3/2, 5/2 et 5/3.

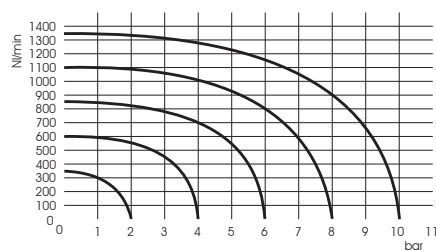
La serie di valvole pneumatiche di Airwork, possiedono caratteristiche di grande robustezza, affidabilità e versatilità di montaggio, infatti la serie VK si possono montare in diversi modi: in linea, a parete, su base multipla, su collettori e persino su cilindro.
Sono disponibili in tra taglie 1/8, 1/4 e 1/2 nelle funzioni 3/2, 5/2 e 5/3.

TECHNICAL DATA / DONNÉES TECHNIQUES / DATI TECNICI

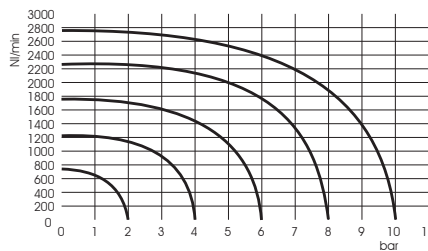
| | 1/8 | 1/4 | 1/2 |
|---|---|--------------------|----------------------|
| Flow rate 6 bar Δp 1bar / Débit à 6 bar Δp 1bar / Portata a 6 bar Δp 1bar | 550 NI/min | 1100 NI/min | 4600NI/min |
| Nominal orifice / Diamètre nominal / Diametro nominale | 5mm | 7.5mm | 13mm |
| Response times mono-stable / Temps réponse monostable / Tempi risposta monostabile | TRA 6ms / TRR 15ms | TRA 7ms / TRR 15ms | TRA 24ms / TRR 43ms |
| Response times bi-stable / Temps réponse bistable / Tempi risposta bistabile | TRA 7ms / TRR 7ms | TRA 7ms / TRR 7ms | TRA 30ms / TRR 30 ms |
| Coils tension / Tension bobine / Tensione bobine | 12VDC - 24VDC - 24VAC - 110VAC - 220VAC 50/60Hz | | |
| Pressure range / Pression d'utilisation / Pressione di esercizio | 2.5 ÷ 10bar | | |
| Temperature range / Temperature d'utilisation / Temperatura di esercizio | -10°C ÷ +60°C | | |

FLOW RATES / COURBE DE DEBIT / PORTATE

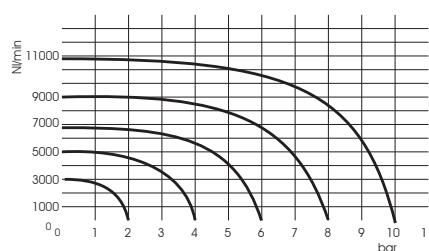
1/8



1/4



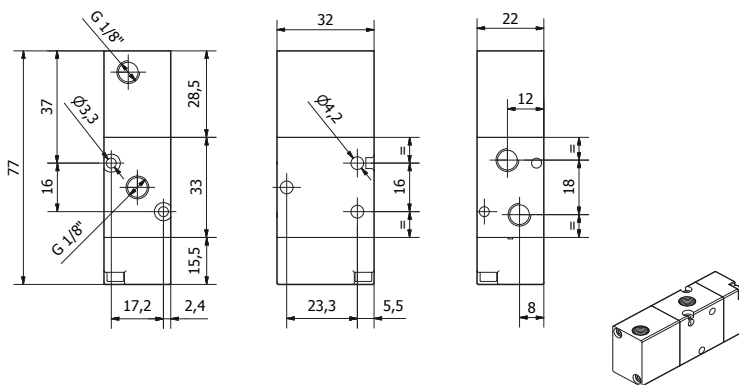
1/2



FAST SELECT / SELECTION RAPIDE / SELEZIONE RAPIDA

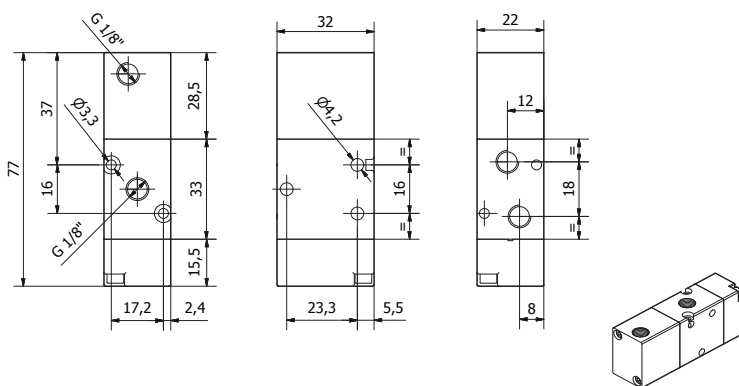
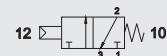
| | |
|--|---|
| | monostable / monostable / monostabile VK83PNMNC-T 3/2 1/8 NC / NF / NC VK43PNMNC-T 3/2 1/4 NC / NF / NC VK23PNMNC-T 3/2 1/2 NC / NF / NC |
| | monostable / monostable / monostabile VK83PNMNA-T 3/2 1/8 NO / NO / NA VK43PNMNA-T 3/2 1/4 NO / NO / NA VK23PNMNA-T 3/2 1/2 NO / NO / NA |
| | bistable / bistable / bistabile VK83PNB00-T 3/2 1/8 VK43PNB00-T 3/2 1/4 VK23PNB00-T 3/2 1/2 |
| | monostable / monostable / monostabile VK85PNM00-T 5/2 1/8 VK45PNM00-T 5/2 1/4 VK25PNM00-T 5/2 1/2 |

| | |
|--|---|
| | bistable / bistable / bistabile VK85PNB00-T 5/2 1/8 VK45PNB00-T 5/2 1/4 VK25PNB00-T 5/2 1/2 |
| | monostable / monostable / monostabile VK86PNMCC-T 5/3 1/8 CC / CF / CC VK46PNMCC-T 5/3 1/4 CC / CF / CC VK26PNMCC-T 5/3 1/2 CC / CF / CC |
| | monostable / monostable / monostabile VK86PNMCA-T 5/3 1/8 CO / CO / CA VK46PNMCA-T 5/3 1/4 CO / CO / CA VK26PNMCA-T 5/3 1/2 CO / CO / CA |
| | monostable / monostable / monostabile VK86PNMCP-T 5/3 1/8 CP / CP / CP VK46PNMCP-T 5/3 1/4 CP / CP / CP VK26PNMCP-T 5/3 1/2 CP / CP / CP |



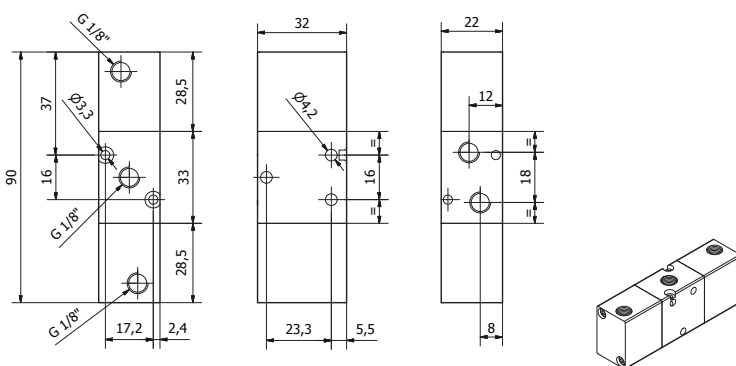
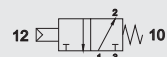
1/8 - 3/2 NC monostable
1/8 - 3/2 NF monostable
1/8 - 3/2 NC monostabile

CODE
VK83PNMNC-T



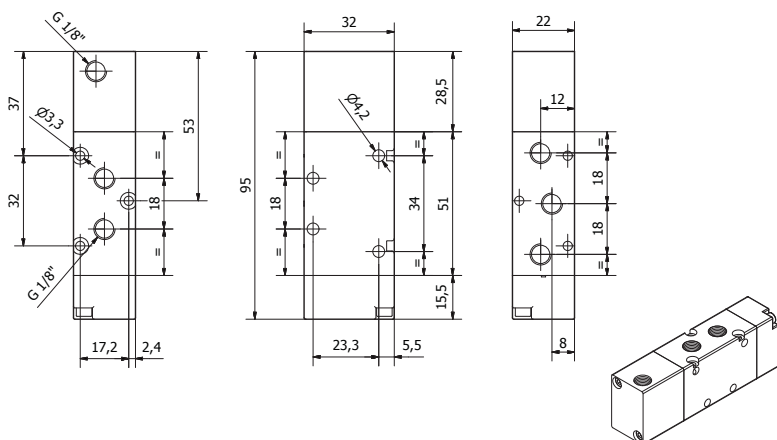
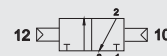
1/8 - 3/2 NO monostable
1/8 - 3/2 NO monostable
1/8 - 3/2 NA monostabile

CODE
VK83PNMNA-T



1/8 - 3/2 bistable
1/8 - 3/2 bistable
1/8 - 3/2 bistabile

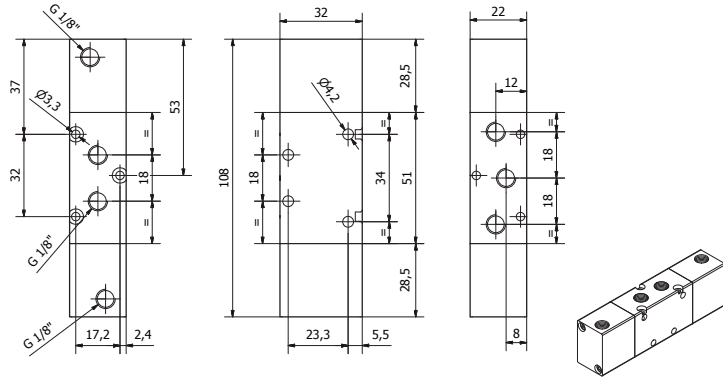
CODE
VK83PNB00-T



1/8 - 5/2 monostable
1/8 - 5/2 monostable
1/8 - 5/2 monostabile

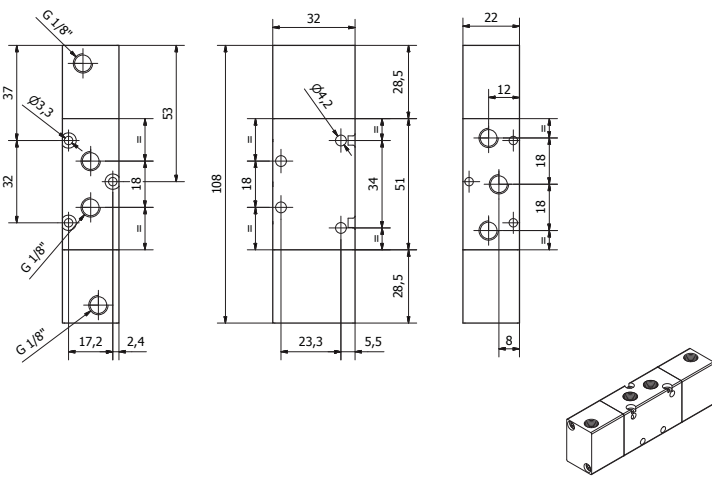
CODE
VK85PNM00-T





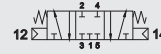
1/8 - 5/2 bistable
1/8 - 5/2 bistable
1/28 - 5/2 bistabile

CODE
VK85PNB00-T



1/8 - 5/3 monostable
1/8 - 5/3 monostable
1/8 - 5/3 monostabile

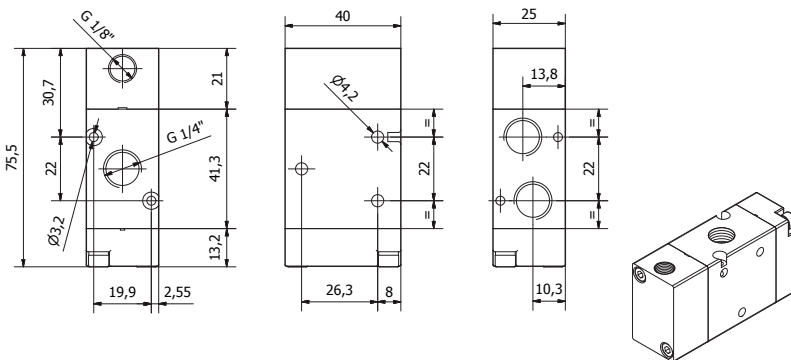
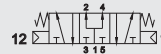
CODE
VK86PNMCC-T CC / CF / CC



CODE
VK86PNMCA-T CO / CO / CA

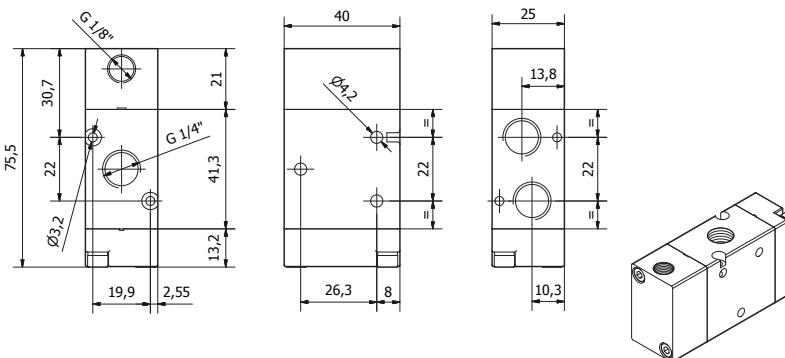
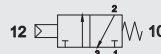


CODE
VK86PNMCP-T CP / CP / CP



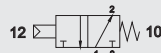
1/4 - 3/2 NC monostable
1/4 - 3/2 NF monostable
1/4 - 3/2 NC monostabile

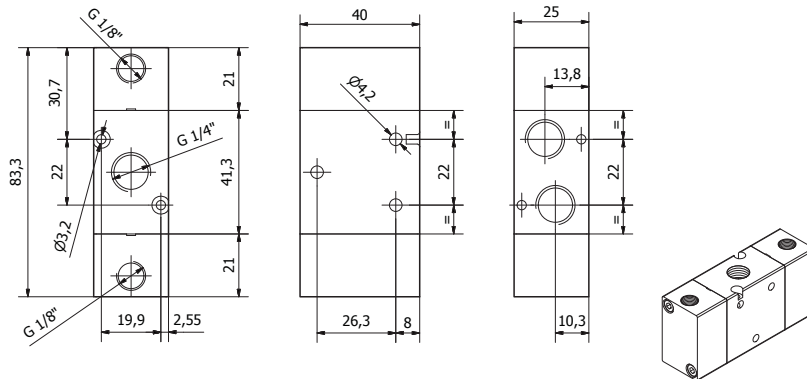
CODE
VK43PNMNC-T



1/4 - 3/2 NO monostable
1/4 - 3/2 NO monostable
1/4 - 3/2 NA monostabile

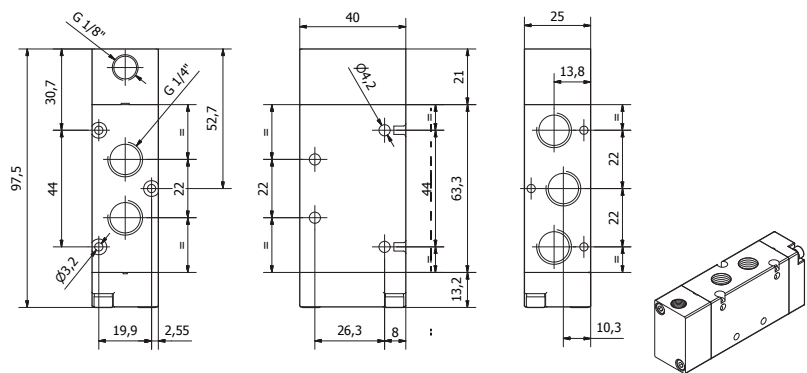
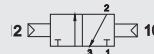
CODE
VK43PNMNA-T





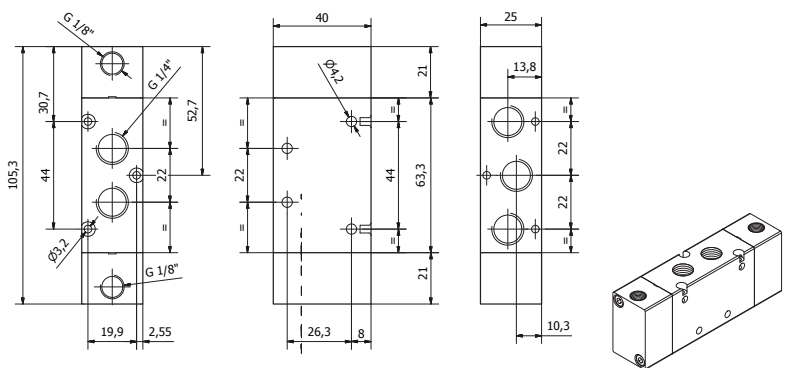
1/4 - 3/2 bistable
1/4 - 3/2 bistable
1/4 - 3/2 bistabile

CODE
VK43PNB00-T



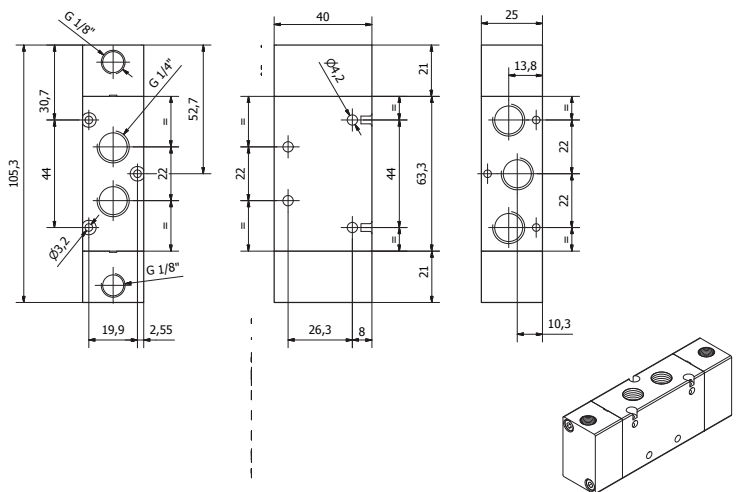
1/4 - 5/2 monostable
1/4 - 5/2 monostable
1/4 - 5/2 monostabile

CODE
VK45PNM00-T



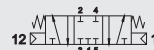
1/4 - 5/2 bistable
1/4 - 5/2 bistable
1/4 - 5/2 bistabile

CODE
VK45PNB00-T



1/4 - 5/3 monostable
1/4 - 5/3 monostable
1/4 - 5/3 monostabile

CODE
VK46PNMCC-T CC / CF / CC

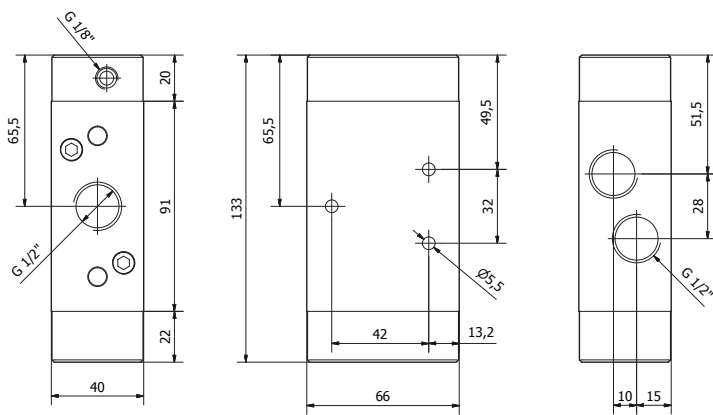


CODE
VK46PNMCA-T CO / CO / CA



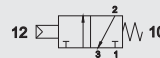
CODE
VK46PNMCP-T CP / CP / CP





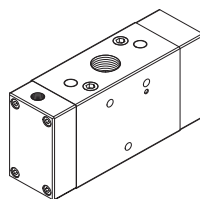
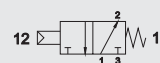
1/2 - 3/2 NC monostabile
1/2 - 3/2 NF monostabile
1/2 - 3/2 NC monostabile

CODE
VK23PNMNC-T



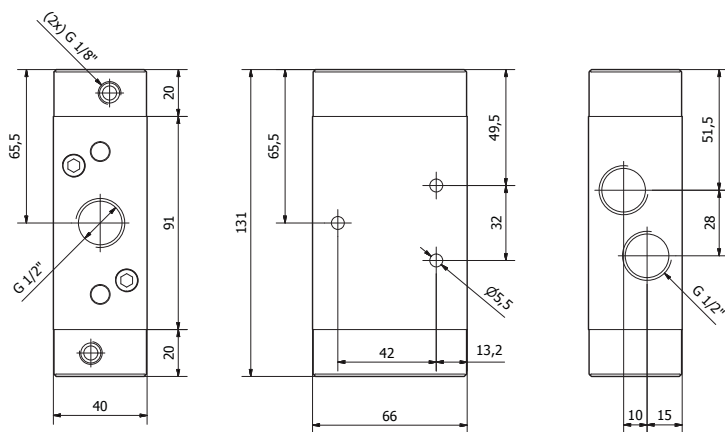
1/2 - 3/2 NO monostabile
1/2 - 3/2 NO monostabile
1/2 - 3/2 NA monostabile

CODE
VK23PNMNA-T



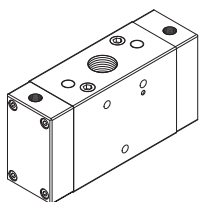
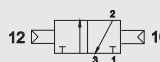
Valves / Valves / Valvole

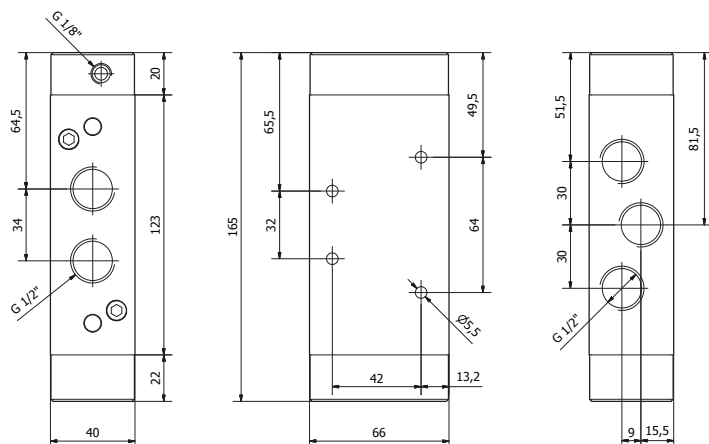
PNEUMATIC ACTUATED VALVES / VALVES PNEUMATIQUE / VALVOLE AD AZIONAMENTO PNEUMATICO



1/2 - 3/2 bistabile
1/2 - 3/2 bistabile
1/2 - 3/2 bistabile

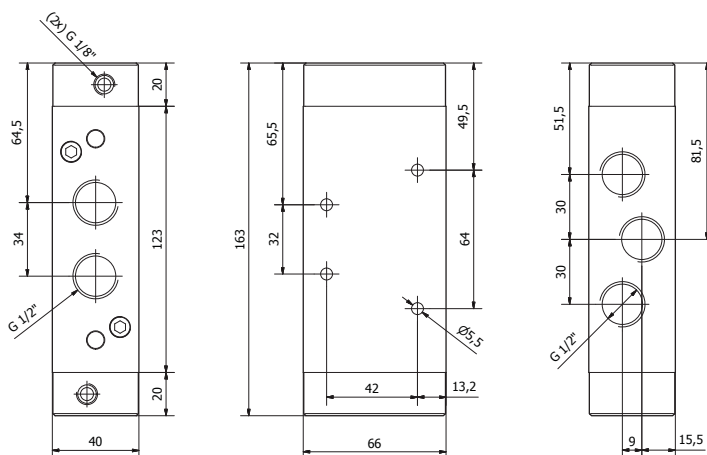
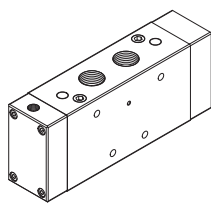
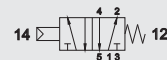
CODE
VK23PNB00-T





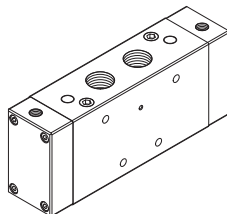
1/2 - 5/2 monostable
1/2 - 5/2 monostable
1/2 - 5/2 monostabile

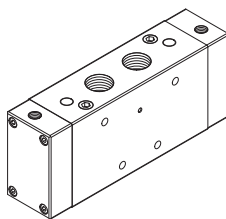
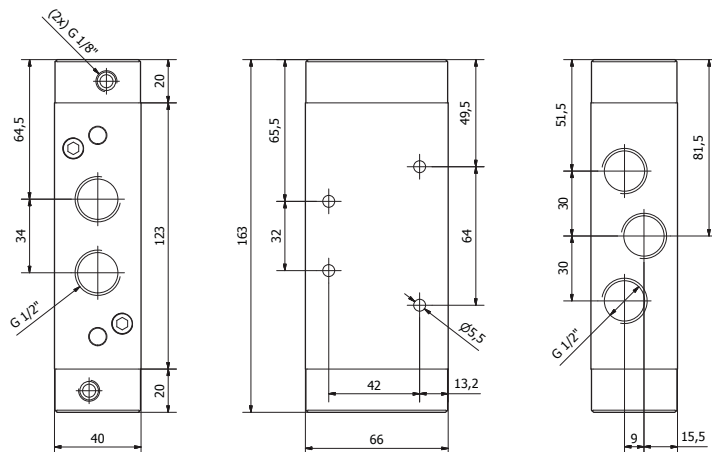
CODE
VK25PNM00-T



1/2 - 5/2 bistable
1/2 - 5/2 bistable
1/2 - 5/2 bistabile

CODE
VK25PNB00-T





1/2 - 5/3 monostable
1/2 - 5/3 monostable
1/2 - 5/3 monostabile

CODE
VK26PNMCC-T CC / CF / CC

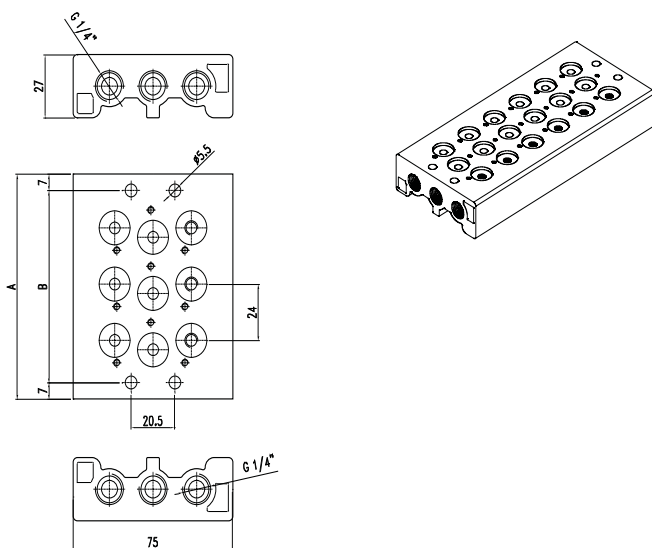


CODE
VK26PNMCA-T CO / CO / CA



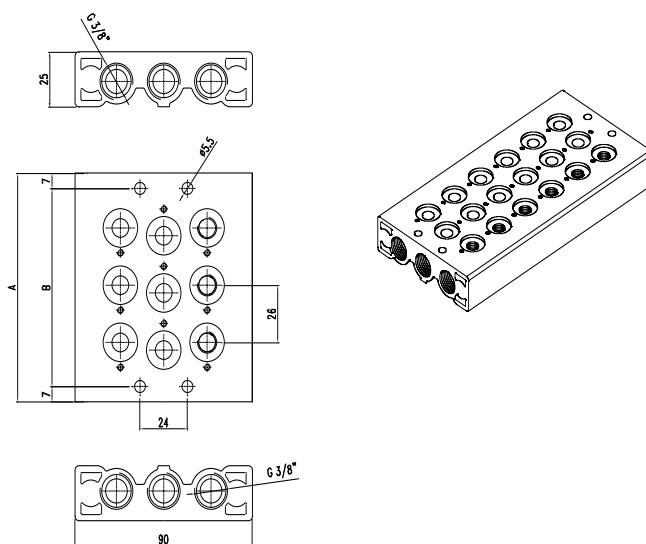
CODE
VK26PNMCP-T CP / CP / CP





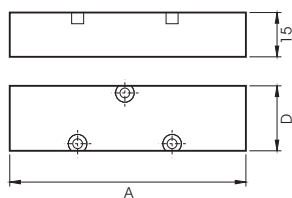
MANIFOLD FOR 1/8 VALVES
EMBASE MULTIPLE POUR VALVE 1/8
SOTTOBASE PER VALVOLE 1/8

| CODE | STATIONS | A | B |
|----------|----------|-----|-----|
| SB407202 | 2 | 72 | 58 |
| SB407203 | 3 | 96 | 82 |
| SB407204 | 4 | 120 | 106 |
| SB407205 | 5 | 144 | 130 |
| SB407206 | 6 | 168 | 154 |
| SB407207 | 7 | 192 | 178 |
| SB407208 | 8 | 216 | 202 |
| SB407209 | 9 | 240 | 226 |
| SB407210 | 10 | 264 | 250 |



MANIFOLD FOR 1/4 VALVES
EMBASE MULTIPLE POUR VALVE EN 1/4
SOTTOBASE PER VALVOLE 1/4

| CODE | STATIONS | A | B |
|----------|----------|-----|-----|
| SB407302 | 2 | 78 | 64 |
| SB407303 | 3 | 104 | 90 |
| SB407304 | 4 | 130 | 116 |
| SB407305 | 5 | 156 | 142 |
| SB407306 | 6 | 182 | 168 |
| SB407307 | 7 | 208 | 194 |
| SB407308 | 8 | 234 | 220 |
| SB407309 | 9 | 260 | 246 |
| SB407310 | 10 | 286 | 272 |



BLANKING PLATE
PLAQUE DE FERMETURE
PIASTRINA DI CHIUSURA

| CODE | | A | D |
|------------|-----|----|----|
| SB40720004 | 1/8 | 60 | 22 |
| SB40730004 | 1/4 | 70 | 25 |