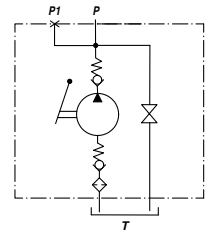
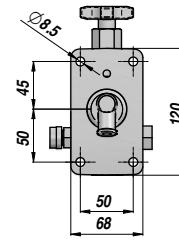
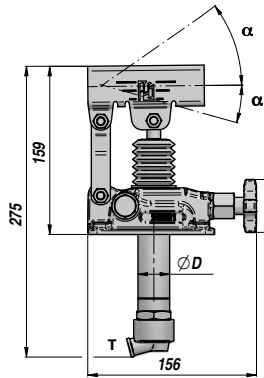
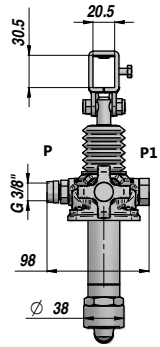
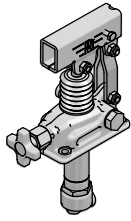


PAM-TS **NEW!**

HANDPUMPE MIT ABLASSHAHN
HAND PUMP WITH LOWERING VALVE

MIT TANKEINRICHTUNG
SUITABLE FOR OIL TANK



Bestell-Nr. Code	Typ Type	cm3/hub cm3/cycle	P MAX bar	ØD	α	α ₁	Temperaturbereich Working Temperature	kg
PAM0141202	PAM-TS 12	12	380	30	37°	13°		2,89
PAM0142502	PAM-TS 25	25	350	35	57°	15°	-20°C +80°C	2,99
PAM0144502	PAM-TS 45	42	280	40	52°	28°		3,12

DW Handpumpe für EW Zylinder - Double-stroke for a S.A. cylinder

AUF ANFRAGE - ON REQUEST:

PAMX-TS = HANDPUMPE MIT TRÄGER FÜR RUNDEN HEBEL - HAND PUMP WITH ROUND LEVER HOLDER

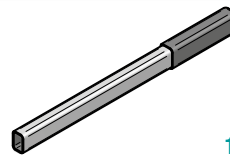
FPM = DICHTSÄTZE IN VITON - VITON SEALS

VMQ = DICHTSÄTZE IN FLUORSILIKON - FLUORINE-SILICONE SEALS

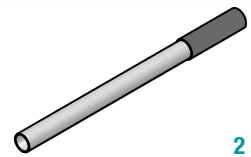
Die Handpumpe wird mit Befestigungsschrauben und NBR-Dichtung geliefert. - Hand Pump is supplied with fastening screws and NBR seal.

HEBEL - LEVERS

Bestell-Nr. Code	Größe Sizes	TYPE	kg
* PAM0290000	20 x 30 x 600	1	0,71
PAM0290900	20 x 30 x 900	1	1,41
PAM0291000	20 x 30 x 1000	1	1,55
PM00290100	Ø27 x 600 (PAMX)	2	0,91



1



2

* HEBEL - STANDARD HAND LEVER

ERSATZTEILE - SPARE PARTS

Bestell-Nr. Code	Beschreibung Description	Für Pumpe For Pump	N°
PAMJVS1245	Kit Ablasventil Lowering valve kit	All type	1
PAMJV01200	Kit Saugventil Suction valve kit	PAM-TS 12	2
PAMJV02500		PAM-TS 25	
PAMJV04500		PAM-TS 45	
PAMJRA1245	Kit Saug-verschraubungsatz mit filter Suction adapter kit with filter	All type	3
PAMJB01245	Kit Schubstangen Conrod kit	All type	4
PAMJ010001	Hebelträger Hand lever holder	All type	5
PAMJPS1200	Kit Kolben+stange Rod Piston assembled kit	PAM-TS 12	6
PAMJPS2025		PAM-TS 25	
PAMJPS4045		PAM-TS 45	
PAMJ020015	Faltenbalg Bellow	All type	7
PAMGT00012	Standard Dichtsätze Standard seal kits	PAM-TS 12	8
PAMGT00025		PAM-TS 25	
PAMGT00045		PAM-TS 45	
PAMJ030017	NBR Dichtung + Schrauben NBR seal + screws	All type	9

